
SHIP'S PARTICULARS

Wind Lift I

Self-elevating crane vessel



SHIP'S PARTICULARS

Wind Lift I



MAIN PARTICULARS

- GustoMSC 4 x leg jacking system, max water depth 45 m, max airgap 10 m
- 4 x HRP 7011 WM Azimuth Thrusters, D=2.2 m in nozzle, 1100 kW each / DP1
- GustoMSC GCC-500-HD Crane, 500 t @ 31 m, 106 m hoisting height above deck, 110 m max radius
- Heliport, D=19.50 m, CAP 437 for Super Puma AS332L2
- Pile guide frame for up to 95 m long piles / project specific deck equipment
- Accommodation for 12 crew plus 38 project personnel

GENERAL INFORMATION

Vessel type	Self elevating crane vessel
Built	2010, Lithuania
Flag	German
Class	GL + 100 A5 DP1 Self Elevating Unit
IMO	AUT9516686
Port of registry	Cuxhaven

SPEED

Transit	7.8 kn (2 Thruster)
Maximum	10.1 kn (4 Thruster)

CONSUMPTION (MGO)

Maximum	approx. 7 m ³ per day
Service	approx. 5 m ³ per day
Stand By	approx. 4 m ³ per day

REGISTER TONNAGE

Type	international
Gross	7,962
Net	2,388
Shipyard	J.J. Sietas KG, Germany
Newbuilding No.	1280

SYSTEMS

DP 1 System	NMS6000 DP 01
Jacking System	2 x 4 HJS 2650
Other Systems	Liquid waste processing system, biological
Generator	Fresh water generator, vacuum evaporator Alfa Laval, 2 x 10 m ³ /day
Oil separator	RWO, Type: SKIT/S DEB 5,0

DIMENSIONS

Length over all	114.87 m (incl. Helideck)
Breadth over all	44.76 m (incl. Helideck)
Max. draft loaded summer	3.90 m

CAPABILITIES

Fuel tanks	560.3 m ³
Oil tanks	17.8 m ³
Water tanks	2 x 188.98 m ³
Sewage tanks	309.4 m ³
Ballast tanks	3011.8 m ³
Bilge water tanks	19.8 m ³
Waste water tanks	56.3 m ³
Waste oil tank	7.9 m ³
Deck space	2224 m ³
Load capacity	2000 m ³
Payload	5 t per m ²

DEAD WEIGHT CAPACITIES

Dead weight a.t.	abt. 7,900 t
-------------------------	--------------

MACHINERY AND PROPULSION

Main engines	4 x 1665 kW (Wärtsilä), Type 9L20
Generator	4 x 1400 kW (SAM), Type SE 500 LL8
Emergency generator	1 x 500 kW
Propulsion	4 x Thruster (HRP)
Power	4 x 1100 kW

LEGS

Amount	4 x
Length	74 m incl. spudcan
Spudcan size	45 m ²
Payload per leg	5000 t

DECK EQUIPMENT

Main crane	500 t @ 31 m outreach
Auxiliary crane	12 t @ 20 m outreach
Helideck	19 m @ 9 t, approved for Super Puma
Winches	4 x single drum-mooring winches Type: 2848150, 500 kN
Mooring	4 No DYNEEMA One w. 510 kN
Anchor	2 anchor + 1 auxiliary anchor
Electrical systems	690 V / 440 V / 230 V, 60 Hz

LIFE-SAVING APPLIANCES

Life-saving raft	4 x Viking
Life boat	GRP closed MOB Rescue Boat
Life-jackets	52 pieces
Survival suits	52 pieces
Radar Transponder	SART EPIRB

ACCOMMODATION

All cabins are fully air-conditioned and equipped with wet rooms

Single cabins	10 x
Double cabins	20 x

FENDER

4 x 2500 x 4000 Floating Foam Fender
5 x 1200 x 2000 Floating Foam Fender

COMMUNICATION AND NAVIGATION

Radar	Chartplot 1100
Compass	Raython Reflecta
(D) GPS	SAAB R4
Sart	1x DEBEG 5900
VHF-DSC	RT5022
VHF Portable	Axis 50 GmDSS
MF/HF DSC	System 5000 MF/HF
Inmarsat-F	Debeg 3270
Echolot	LAZ 5100
Autopilot	NAUTOPILOT 2015
Satcom	INMARSAT inc. GMDSS Mini C. TT-300
AIS	UAIS DEBEG 3400

TV / INTERNET

Mess room and all cabins are equipped with TV and internet access

TV equipment

Type	Mobil SAT81_TV
EIRP	min. 44 dBW
Skew control	automatic
GPS	available
Satellite	four
Gyro sensor	3-axis Gyro & 2-axis tilt
Tracking technology	Servo Stabilization
Power	110, 220 VAC 30 W nominal

Internet equipment

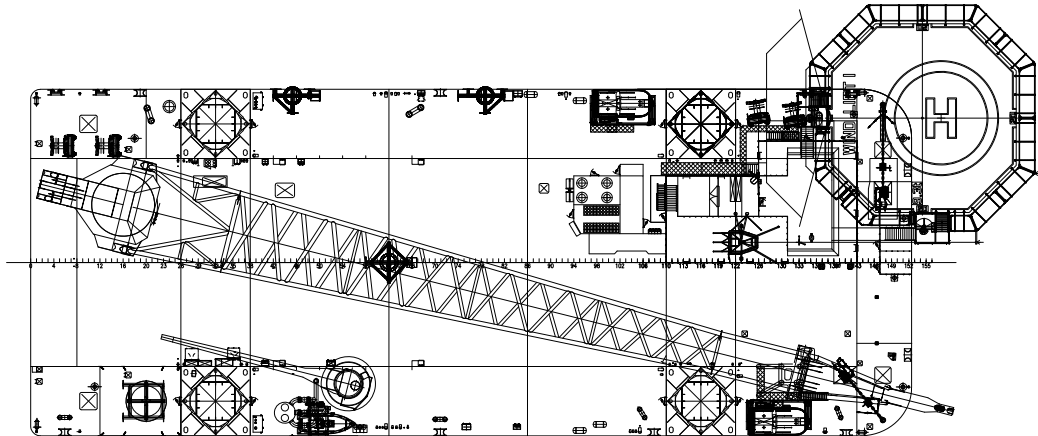
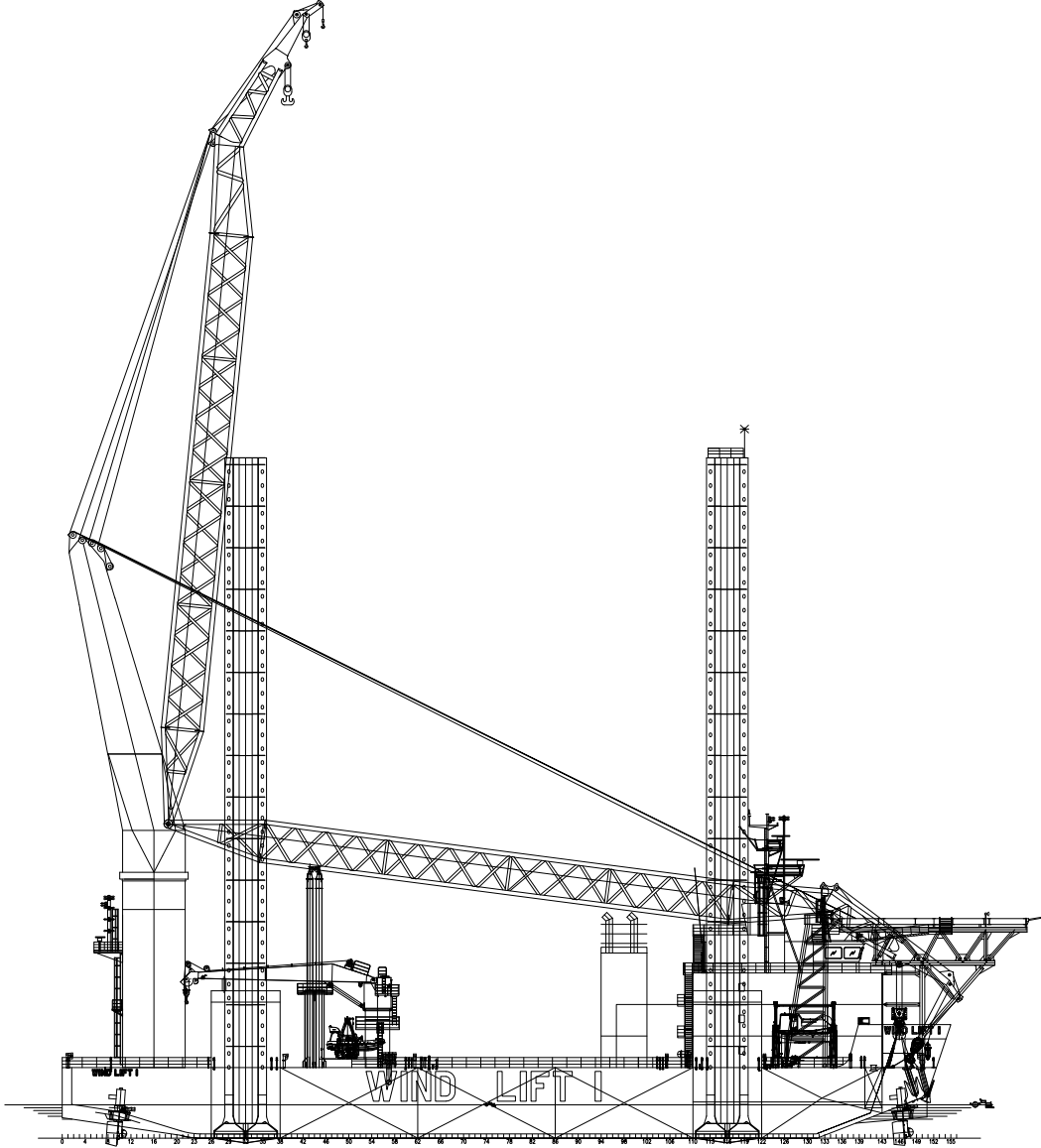
Type	Mobil SAT91
EIRP	min. 44 dBW
Frequency performance	TX: 14.0-14.5 GHz KU
Antenna	gain 12.25 Ghz 34 dB 12.25 Ghz 39 dB

All particulars believed to be correct, but not guaranteed.

SHIP'S PARTICULARS

Wind Lift I

GENERAL ARRANGEMENT PLAN



All particulars believed to be correct, but not guaranteed.